



INTERNATIONAL UNION
OF RAILWAYS


UIC perspective on AI in railways

Moscow, 28th September 2019

Rail as the smart backbone for mobility

A network diagram consisting of a grid of grey nodes connected by thin grey lines. A thick blue arc highlights a specific path or connection across the network.

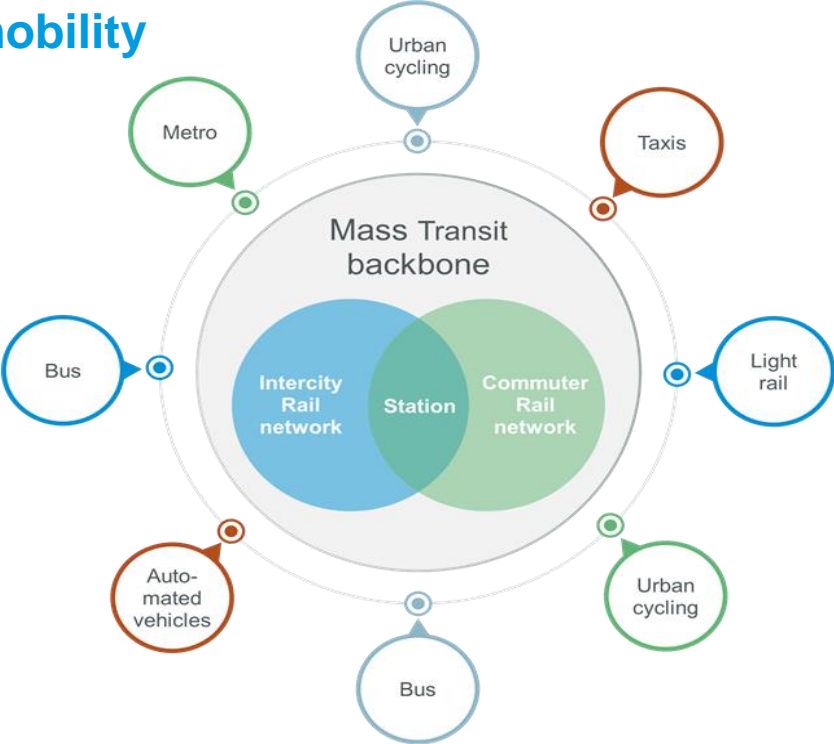
Internal regulation

1. Minimise the internal complexity of the rail system
 2. Create interoperable train paths
 3. Connect different railway systems
 4. Insuring Safety/Security in the digital age
- 
- A network diagram consisting of a grid of grey nodes connected by thin grey lines. A thick blue arc highlights a specific path or connection across the network.

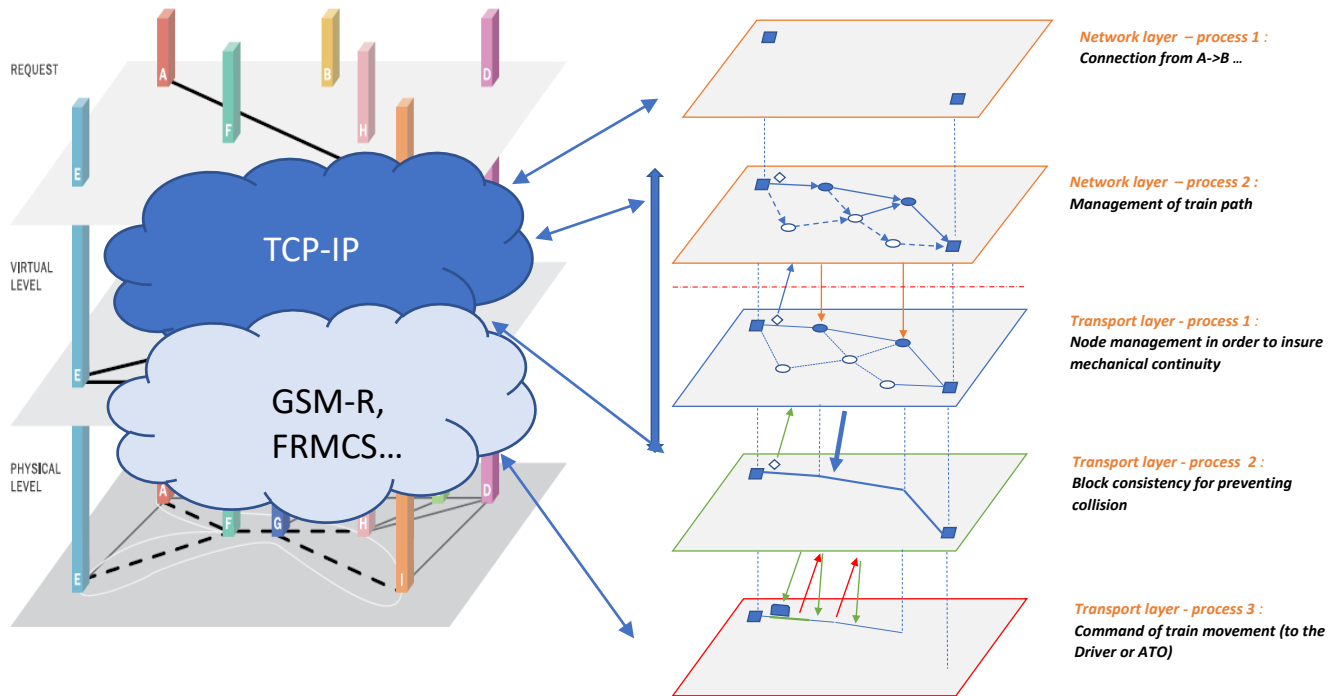
External interfaces

1. Multimodality : MaaS and Logistic chain management
2. Interfacing with other regulations: customs, public transport.
3. Creating and securing common data models and exchange protocols

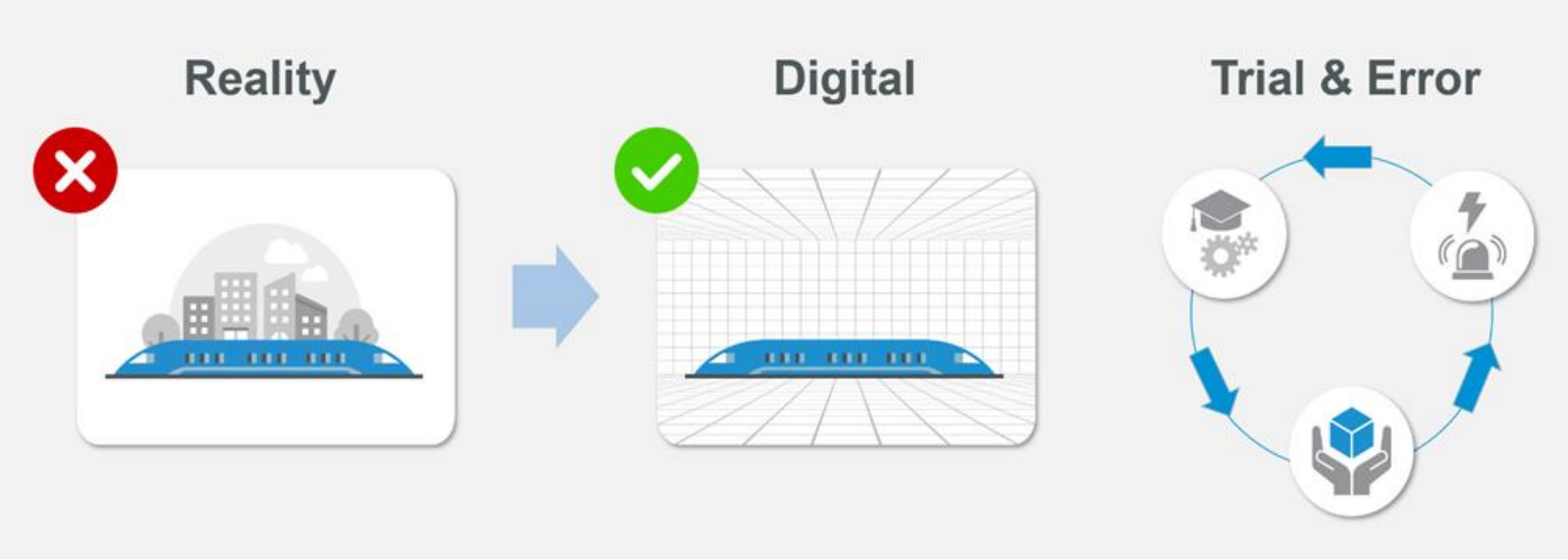
The path to door to door mobility



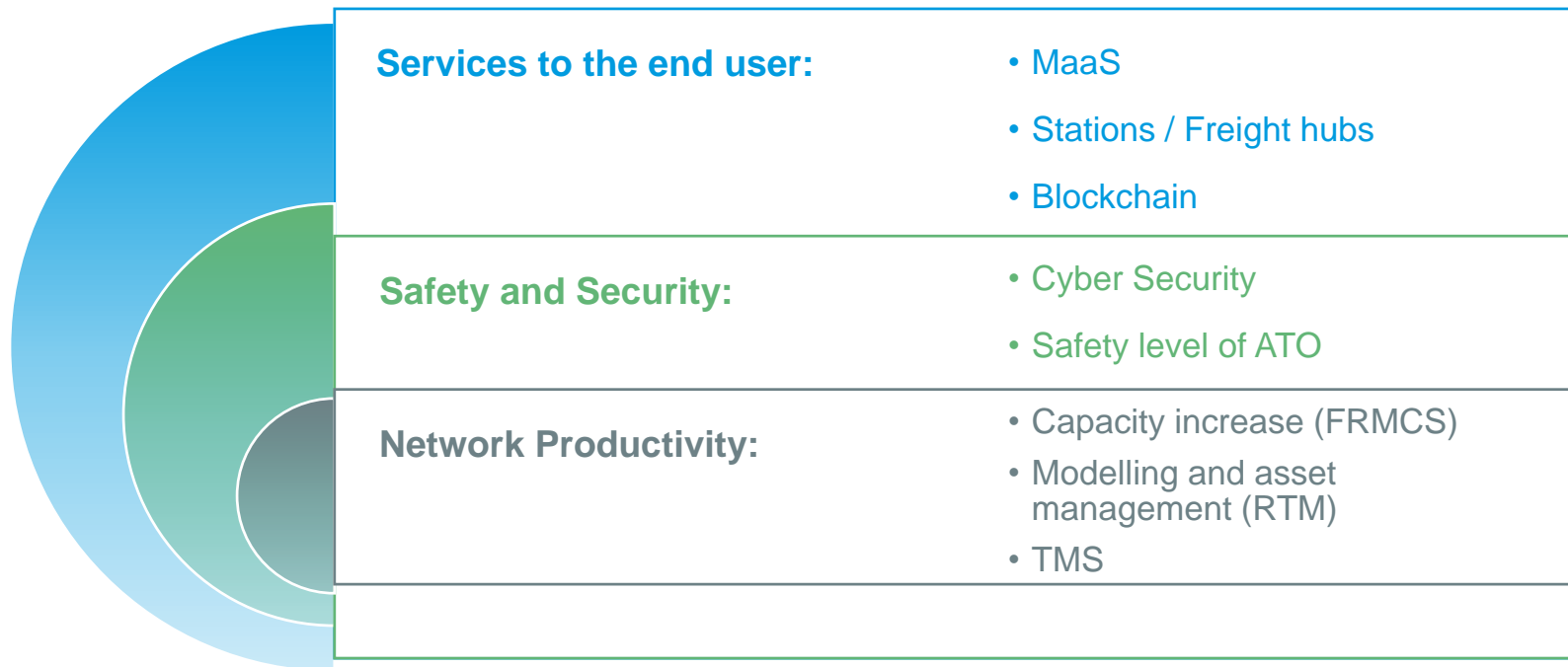
Seamless connections: an analogy between IP and Railway



Governance by algorithm: common vision on digital twins



3 key processes





INTERNATIONAL UNION
OF RAILWAYS

Stay in touch with UIC!

www.uic.org



#UICrail

europa@uic.org